



Electric Rates are Decreasing!

Effective for all bills issued as of April 1, 2017: The "GTA" component on all SELCO electric bills will decrease to $-\$0.0145$ per kWh. The GTA, or Generation & Transmission Adjustment, is reset twice annually to more accurately reflect the seasonal fluctuations in power cost experienced by SELCO.

A customer using 750 kWh per month will see their bill decrease from \$89.57 to \$79.67 a savings of \$9.90!

April Hours

Patriots' Day

APRIL 17, 2017

OFFICE: CLOSED

HELP DESK: 10AM to 6PM



750kWh of Electricity

Cost as of April 1, 2017



SELCO's Earth Day Farmers' Market

SELCO is sponsoring a Farmers' Market at the Sherwood Middle School Gym on Friday April 21st from 4 to 7 pm. We will have local vendors with fresh local honey, jams & jellies, cheeses, baked goods, and more.

Stop by the SELCO booth to receive a free tree! We will be giving away 100 Lilacs, 100 Azaleas, and 100 Tuliptrees.



- **Fragrant Lilac** - Light purple or lavender flowers, long-lasting blooms in the early spring, extremely hardy shrub used for hedges, screens or in individual landscape pieces. Grows 8' to 15' high with a 6' to 12' spread.
- **Orange Azalea** - Clusters of orange spring blossoms, colorful fall foliage. Grows 4' to 6' tall and 4' wide.
- **Tuliptree** - Bright green leaves that resemble tulip flowers, golden yellow fall colors. Grows 70' to 90' tall with a 40' spread.

Shrewsbury residents only. Proof of residency required (bring SELCO bill or ID). Trees are available on a first come, first serve basis. Good while supplies last.

Join us for this family-friendly event. Hope to see you there!

Report a Streetlight Outage

Is there a streetlight out in your neighborhood? Is there one that flickers on and off? Who do you call, what do you do? The answer is simple, visit:

SELCO.ShrewsburyMA.gov/Streetlight

This simple form will let our team know where the streetlight is located and we will be out to investigate and fix the issue as soon as possible!





Contact Us

Shrewsbury Electric and Cable Operations

100 Maple Avenue

Shrewsbury, MA 01545

SELCO.ShrewsburyMA.gov

Customer Service: 508-841-8500

Office Hours: 7:30 AM to 4:30 PM M-F

Helpdesk: 508-841-8572

Helpdesk Hours: 8 AM to 10 PM M-Sat.
10 AM to 10 PM Sun.

Remember to Always Dig Safe!

Planning home improvements? Planting a tree? Installing a fence or deck? Whether you do it yourself or hire a professional, a safe job starts with a call to Dig Safe® at 811.

Dig Safe® is a not-for-profit clearinghouse that notifies participating utility companies of your plans to dig. In turn, these utilities (or their contract locating companies) respond to mark out the location of their underground facilities. Dig Safe is a free service.



It's a risk to make faulty assumptions about when to notify Dig Safe. That's why state law requires you to notify Dig Safe for even small projects, like installing a mailbox or planting shrubs. The depth of utility lines vary, and there may be multiple utility lines in a common area.

It's important to know what's below. Call 811 to avoid utility service disruption to an entire neighborhood, harm to you and those around you, as well as fines and repair costs.

Prime Media

A VISUAL COMMUNICATIONS COMPANY

**Advertise Your Business
on SELCO Digital Cable**

**Cable advertising is the most effective and
affordable way to advertise your business!**

**Let your local Prime Media representative
help you choose from top rated networks
on SELCO Digital Cable.**

Let our team work for your business!

For more information contact:

Guy Ferrante, Account Executive
Prime Media
(508) 826 - 5567
gferrante@pmpmail.net

SELCO 0% Interest Energy Conservation Loan

Interested in making your home more energy efficient? Apply for a zero interest energy conservation loan from SELCO!

Replace old windows and doors, add insulation, or install supplemental solar at 0% interest for up to 60 months!

Loan details and applications are available at SELCO.ShrewsburyMA.gov/loans or by calling 508-841-8500. Residents must contact HELPS for a free home energy audit (1-888-333-7525) and submit a loan application for pre approval before the start of any work.

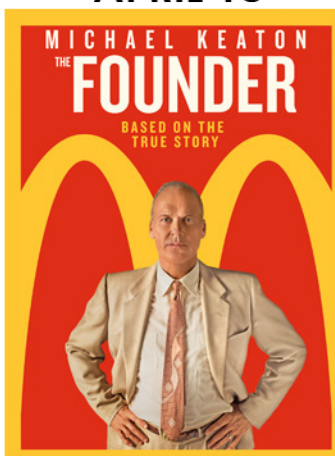
GO
GREEN.
SAVE
GREEN.



APRIL 4



APRIL 18



APRIL 25

