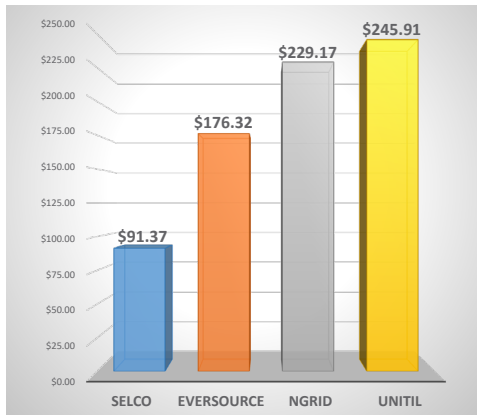


# SELCO Local Lines

DECEMBER 2021

## ELECTRIC RATE COMPARISON



750 kWh of Electricity cost as of 12/1/2021

## #LightUpShrewsbury

SELCO and the Shrewsbury Town Center Association are teaming up this holiday season to **#LightUpShrewsbury**. Enter for your chance to **"Flip the Switch"** at the 2022 Shrewsbury Town Center Association's Light the Common event!

### How to Enter:

- Decorate for the Holidays
- Post Photos to Instagram or Facebook
- Tag Us and Use **#LightUpShrewsbury**

**Instagram:** @SELCOnews @ShrewsburyTCA

**Facebook:** @SELCOnews @ShrewsburyTownCenterAssociation



Contest ends on December 31, 2021. One entry per household, winners are selected at random. Shrewsbury, MA residents only. Visit [SELCO.ShrewsburyMA.gov/lightup](http://SELCO.ShrewsburyMA.gov/lightup) for more information

## HOLIDAY HOURS

### December 24:

Office: Closed  
Helpdesk: 8 AM - 2 PM

### December 25:

Office/Helpdesk: Closed

### December 31:

Office: Closed  
Helpdesk: 8 AM - 2 PM

### January 1:

Office/Helpdesk: Closed

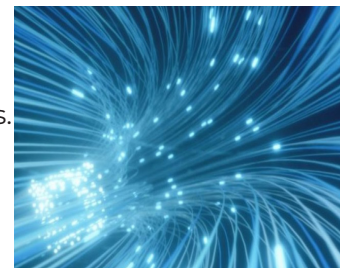


## SELCO FIBER TO THE HOME

Construction of our 100% fiber optic network is well underway! Fiber service offers outstanding reliability and symmetrical upload and download speeds.

As fiber becomes available in neighborhoods throughout Shrewsbury, SELCO will be contacting customers to schedule installation.

Visit [www.SELCOupgrade.com](http://www.SELCOupgrade.com) for frequently asked questions, maps, and project deployment timelines.



## UPCOMING CHANNEL CHANGES



**diy**  
network  
**BECOMES**



MAGNOLIA NETWORK

**JANUARY 5, 2022**



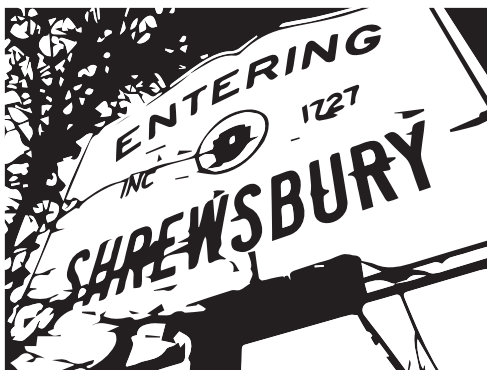
**WDPX COURT TV  
CHANNEL 18 BECOMES**

**GRIT**

**JANUARY 5, 2022**

**NBC Sports**

**DISCONTINUED  
JANUARY 1, 2022**



## CONTACT US

### Shrewsbury Electric & Cable Operations

100 Maple Avenue

Shrewsbury, MA 01545

[SELCO.ShrewsburyMA.gov](http://SELCO.ShrewsburyMA.gov)

## CUSTOMER SERVICE

### Customer Service:

508-841-8500

[customerservice@shrewsburyma.gov](mailto:customerservice@shrewsburyma.gov)

### Office Hours:

7:30 AM to 4:30 PM M-F

## HELPDESK

### Helpdesk:

508-841-8572

[helpdesk@shrewsburyma.gov](mailto:helpdesk@shrewsburyma.gov)

### Helpdesk Hours:

8 AM to 10 PM M-Sat.

10 AM to 10 PM Sun.

## ADVERTISE ON TV

### Prime Media

A VISUAL COMMUNICATIONS COMPANY

Advertise Your Business  
on SELCO Digital Cable

Cable advertising is the most effective and  
affordable way to advertise your business!

Let your local Prime Media representative  
help you choose from top rated networks  
on SELCO Digital Cable.

Let our team work for your business!

For more information contact:

Guy Ferrante, Account Executive  
Prime Media  
(508) 826 - 5567  
[gferrante@primemail.net](mailto:gferrante@primemail.net)

## NEW SNOW BLOWER REBATES

SELCO has added approved battery snowblowers to our yard equipment rebates! Customers are eligible for up to a \$100 rebate based on the qualifying item purchased.

### ELECTRIC YARD EQUIPMENT IS

- Cordless
- Quiet
- Low maintenance
- Emissions free
- Lightweight
- Efficient



[SELCO.SHREWSBURYMA.GOV/LAWN](http://SELCO.SHREWSBURYMA.GOV/LAWN)

### Save even more when you shop local at Papa's Hardware!

Get an **additional 10%** off anything in the Greenworks line when you purchase two Greenworks yard equipment SKUs from Papa's Hardware in Shrewsbury.

Visit [SELCO.ShrewsburyMA.gov/lawn](http://SELCO.ShrewsburyMA.gov/lawn) to learn more.

## SHARE THE WARMTH

SELCO is asking you to "Share the Warmth" with your neighbors who are having difficulty affording their electric bills this winter.

You can help by visiting

[SELCO.ShrewsburyMA.gov/STW](http://SELCO.ShrewsburyMA.gov/STW)

100% of donations go directly to  
Shrewsbury residents in need.



## DO YOU NEED ASSISTANCE?

Contact one of the following agencies to apply for Share the Warmth. Make sure you get your application before the March 1, 2022 deadline!

Agency	Phone	Website
Shrewsbury Youth & Family Services	(508) 845-6932	<a href="http://syfs-ma.org">syfs-ma.org</a>
St. Mary's Church	(508) 845-6341	<a href="http://stmarysparish.org">stmarysparish.org</a>
First Congregational Church	(508) 845-7286	<a href="http://fccsm.org">fccsm.org</a>
St. Anne's Parish	(508) 799-4169	<a href="http://stannesparish.org">stannesparish.org</a>
Council On Aging	(508) 841-8640	<a href="http://shrewsburyma.gov/coa">shrewsburyma.gov/coa</a>

## USE LESS. SAVE MORE.



## SELCO'S NEW CONNECTED HOMES PROGRAM

EARN MONTHLY INCENTIVES FOR EACH ENROLLED DEVICE. LEARN MORE AT [MUNIHELPS.ORG/CONNECTEDHOMES](http://MUNIHELPS.ORG/CONNECTEDHOMES)